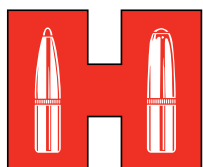


Lock-N-Load[®] Quick Trickle[™]



Hornady[®]
Accurate. Deadly. Dependable.

Your Lock-N-Load® QuickTrickle™ has been treated with a rust preventative that must be removed before use. Hornady One Shot® Gun Cleaner and Lube is recommended to treat all parts before use to ensure easy and proper function of the QuickTrickle.™

TO DEGREASE:

Liberally spray One Shot® Gun Cleaner and Lube to the inside of the Casting Body (3) of the QuickTrickle™ through the Powder Hopper Tube (2) and through the Powder Trickle Tube (11). Applying Hornady One Shot® Gun Cleaner and Lube to all metal parts will remove all rust preventatives or oils that may remain on the QuickTrickle™ causing powder to stick or ball up. Be careful not to allow spray on the hopper tube.

ASSEMBLE AND ADJUST:

The Lock-N-Load® QuickTrickle™ features the Hornady Lock-N-Load® bushing system to secure the QuickTrickle™ to the base (13).

1. Insert the male bushing (10) of the Quick Trickle™ into the female bushing (12) of the base (13) and turn clockwise to lock in place.
2. Once the QuickTrickle™ is properly mounted to the base (13) loosen the Hornady Sure-Loc® Lock Ring (9) to adjust the threaded stem to the desired height. Height adjustment is made by threading in to lower and out to raise.

3. When the desired height has been achieved the Hornady Sure-Loc[®] Lock Ring (9) should be threaded down snug to the top of the bushing and tightened.

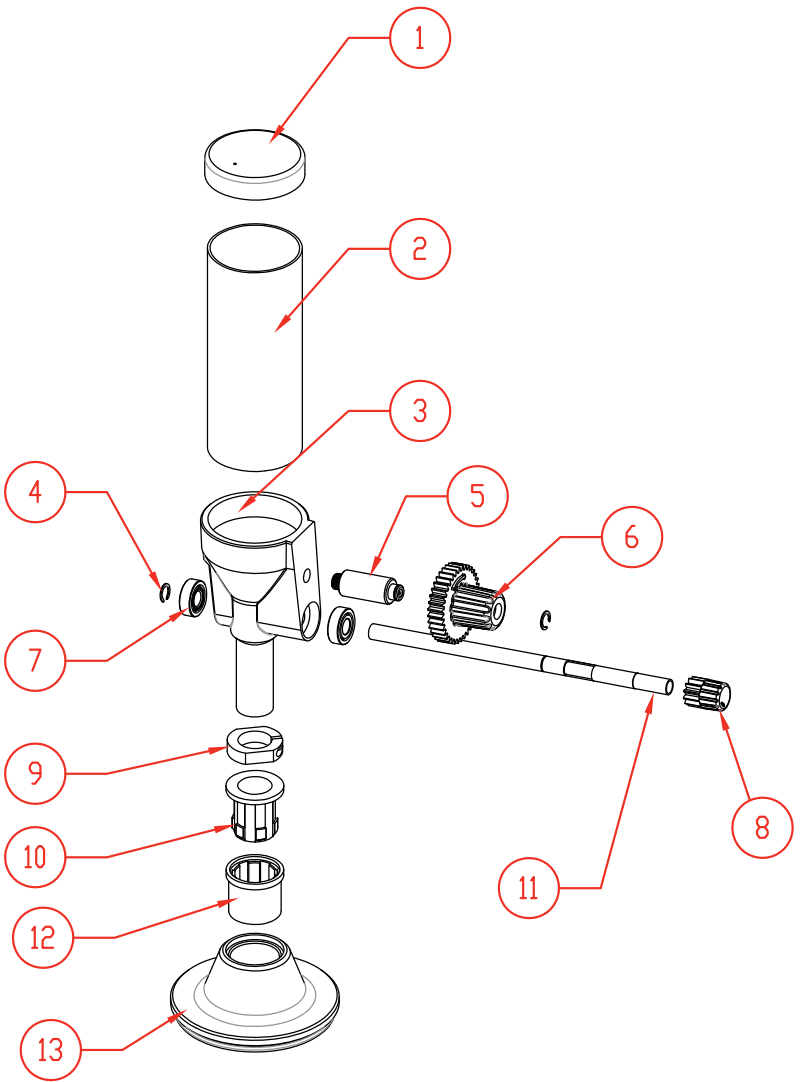
OPERATION:

1. When the stand is properly mounted and the proper height has been achieved powder can be added to the hopper by removing the Hopper Cap (1) and pouring the powder into the hopper.
2. Lock-N-Load[®] QuickTrickle[™] utilizes two powder dispense knobs to provide the user a fast and slow (precise) powder dispense speeds. The larger upper knob (6) will dispense powder quickly when turned clockwise following the reference arrow located on the gear body of the knob.
3. Once the powder charge begins to approach the final amount the smaller dispense knob (8) below the speed knob can be turned counter clockwise to attain a tenth of grain accuracy.
4. To remove powder from the QuickTrickle[™], unlock the QuickTrickle[™] from the Base (13) by turning counter clockwise to disengage the bushing. Once removed from the base the Hopper Cap (1) can be removed and the powder pored back into the desired container. Keep the QuickTrickle[™] Tube (11) in an upright position when pouring the powder from the hopper to prevent the remaining powder in the QuickTrickle[™] Tube (11) from spilling.

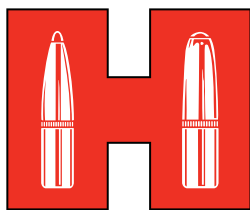
PRECAUTIONS:

1. Ensure the QuickTrickle™ is properly mounted to the base before operating.
2. Any moisture in the hopper, body, or tube will cause powder to stick or ball up.
3. Adjust the height of the QuickTrickle™ close to the scale pan to prevent powder from bouncing out during use.
4. Do not store powder in the QuickTrickle™ as this may cause the tube to become deformed or discolored.
5. Not all scales are capable of handling a trickle. Use a high-precision scale designed to detect the minute changes in weight experienced during trickling. The use of an inadequate scale can cause potentially harmful loads.

The Hornady® Lock-N-Load® Bench Scale (Item No. 050108) is specifically designed to handle trickling and is recommended for use with the Lock-N-Load® QuickTrickle™.



ITEM NO.	PART NUMBER	DESCRIPTION	QTY
1	170405	CAP HOPPER POWDER	1
2	480170	POWDER HOPPER TUBE	1
3	480110	QUICK TRICKLE CASTING	1
4	480190	3/8" C-CLIP	2
5	480201	SHAFT LARGE SPUR GEAR	1
6	480150	LARGE SPUR GEAR HANDLE	1
7	480130	BEARING	2
8	480160	SMALL SPUR GEAR HANDLE	1
9	044000	SURE-LOC LOCK RING	1
10	392302	LOCK-N-LOAD BUSHING DIE	1
11	480140	POWDER TRICKLE TUBE	1
12	392301	LOCK-N-LOAD BUSHING PRESS	1
13	480202	BASE	1



Hornady[®]

Accurate. Deadly. Dependable.

P.O. Box 1848 • Grand Island, NE 68802-1848

308-382-1390 • 800-338-3220

www.hornady.com • webmaster@hornady.com