

NEW DIMENSION™ DIES

RELOADING



Easy Access Die Box

Every Custom-Grade New Dimension die set comes in a convenient box which lets you store fully adjusted dies, Lock-N-Load bushings, shell holders and a taper crimp die. This box can also be purchased separately for use with your current die sets.

No. 544600 \$4.17 each

**Hornady Custom-Grade™
New Dimension™ Dies are the
most advanced reloading dies
available today.**

Hornady's Custom Grade™ Dies provide a lifetime of reloading. They're so well-crafted that they're guaranteed never to break or wear out from normal use and now they're better than ever! The new Zip Spindle™ design features a series of light threads cut on the spindle and spindle collet. This design eliminates spindle slippage and takes the knuckle-busting out of tightening the spindle lock while making spindle adjustments a snap. Hornady's new Zip Spindle™ is nothing short of genius!

F E A T U R E S

1) NEW ZIP SPINDLE™ DESIGN

Provides precise fit by aligning the spindle perfectly with the center of the die. The new design features a series of light threads cut on the spindle and spindle collet which eliminates slippage and takes the knuckle-busting out of tightening the spindle lock.

2) WRENCH FLATS ON SURE-LOC® LOCK RINGS

Makes fine adjustments easy, and eliminates damage to rings that pliers can cause. Locking screw on Sure-Loc® ring clamps closed so the screw never contacts the threads.

3) HEADED STEEL DECAP PIN

Won't bend, crack or break, even when depriming cases with crimped primer pockets. Rugged design for long life but replaceable if something happens to it.

4) ELLIPTICAL EXPANDER POLISHED TO SMOOTH FINISH

Provides "smooooooth" release from case neck. Reduces or eliminates neck stretch. Threads on so it can't pull loose. Also eliminates the need for a separate expander die for "necking up" to the next caliber.

5) ALL-STEEL SEATER ADJUSTMENT SCREW

Provides added strength and reduces thread wear. Easily adjusts for bullet seating depth.

6) COMPRESSION WASHER

Provides slight amount of tension to make fine adjustments easier, and holds setting once in place.

7) RETAINER RING

Removes easily for fast disassembly and cleaning of the die.

8) SLIDING ALIGNMENT SLEEVE

Holds the bullet, case neck and seating stem in alignment within the sliding sleeve BEFORE the bullet enters the neck of the case. Ensures the straightest bullet seating over fixed or solid die seaters.

9) BUILT-IN CRIMPER

Gives you the option of crimping without the need for an extra crimp die.




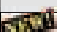



See a complete listing of Shell Plates and Shell Holders on page 74.



Custom-Grade™ and New Dimension™ are trademarks of Hornady Manufacturing Co. Sure-Loc® is a registered trademark of Hornady Manufacturing Co.

SERIES I RIFLE DIES

BOTTLENECK CARTRIDGE	Full-Length Die Set \$43.40	Full-Length Die \$33.07	Seating Die \$22.60	Primer Punch Size	Shell Holder \$8.17	Trimmer Pilot \$4.24	Bullet Puller Collet \$10.93
 17 REM FIREBALL (.172)	546117	046200	TBA	Small	16	N/A	1
204 RUGER (.204)	546201	046590	044139	Small	16	16	14
22 HORNET (.224)	546212	046213	044102	Small	3	1	2
22/250 (.224)	546220	046221	044102	Large	1	1	2
220 SWIFT (.224)	546222	046223	044127	Large	4	1	2
223 WIN SS MAG (.224)	546223	046558	044102	Large	35	1	2
222 REM (.224)	546224	046225	044102	Small	16	1	2
223 REM (.224)	546228	046229	044102	Small	16	1	2
243 WIN SS MAG (.243)	546225	046557	044104	Large	35	3	3
243 WIN (.243)	546244	046245	044103	Large	1	3	3
244/6MM (.243)	546246	046247	044103	Large	1	3	3
25/06 (.257)	546262	046263	044104	Large	1	4	4
 6.5 CREEDMOOR (.264)	546289	TBA	TBA	Large	1	5	4
6.5X55/SCAN (.264)	546282	046283	044106	Large	19	5	4
270 WIN SHORT MAG (.277)	546297	046450	044161	Large	35	6	5
270 WIN (.277)	546300	046301	044107	Large	1	6	5
7X57-7MM MAUSER (.284)	546308	046309	044108	Large	1	7	6
7MM/08 (.284)	546316	046317	044108	Large	1	7	6
7MM EXP/280 (.284)	546320	046321	044108	Large	1	7	6
7MM REM MAG (.284)	546326	046327	044108	Large	5	7	6
7MM WIN SHORT MAG (.284)	546327	046451	044108	Large	35	7	6
7.62X39 (.308)	546424	046425	044126	Large	6	9	7
 30 T/C (.308)	546335	046336	044111	Large	1	9	7
308 MARL EXP (.308)	546357	046358	044111	Large	27	9	7
30/06 (.308)	546340	046341	044112	Large	1	9	7
30/30 WIN (.308)	546342	046343	044111	Large	2	9	7
 300 RCM (.308)	546353	TBA	TBA	Large	5	9	7
300 REM SA ULTRA MAG (.308)	546347	046455	044160	Large	5	9	7
300 WBY (.308)	546350	046351	044112	Large	5	9	7
300 WIN MAG (.308)	546352	046353	044112	Large	5	9	7
308 WIN (.308)	546358	046359	044111	Large	1	9	7
300 REM ULTRA MAG (.308)	546365	046447	044159	Large	5	9	7
303 BRITISH (.312)	546366	046367	044114	Large	11	10	7
300 WIN SHORT MAG (.308)	546369	046453	044160	Large	35	9	7
8MM MAUS (8X57JS) (.323)	546382	046383	044116	Large	1	11	8
 338 RCM (.338)	546399	TBA	TBA	Large	5	11	9
338 WIN MAG (.338)	546390	046391	044117	Large	5	13	9
375 H&H (.375)	546416	046417	044121	Large	5	16	10
375 Ruger (.375)	546415	046418	044121	Large	5	16	10

SERIES II RIFLE DIES

STRAIGHT WALLED CARTRIDGE	3-Die Set \$50.35	Full-Length Die \$36.51	Seating Die \$22.60	Expander Die \$22.52	Primer Punch Size	Shell Holder \$8.17	Trimmer Pilot \$4.24	Bullet Puller Collet \$10.93
30 M1 CARB (.308)	546503	046504	044142	044505	Small	22	9	7
405 WIN (.411)	546425	046456	044162	044571	Large	42	17	11
444 MARLIN (.430)	546551	046552	044149	044553	Large	27	18	12
450 MARLIN (.458)	546553	046587	044152	044568	Large	5	19	13
45/70 GOVMT (.458)	546566	046567	044152	044568	Large	14	19	13
458 WIN (.458)	546569	046570	044153	044568	Large	5	19	13
458 LOTT (.458)	546465	046457	044153	044572	Large	5	19	13

SERIES III RIFLE DIES

BOTTLENECK CARTRIDGE	Full-Length Die Set \$50.35	Full-Length Die \$39.28	Seating Die \$22.60	Primer Punch Size	Shell Holder \$8.17	Trimmer Pilot \$4.24	Bullet Puller Collet \$10.93
17 REM (.172)	546200	046201	044101	Small	16	N/A	1
221 REM (.224)	546210	046211	044102	Small	16	1	2
222 REM MAG (.224)	546226	046227	044102	Small	18	1	2
225 WIN (.224)	546232	046233	044127	Large	4	1	2
240 WBY (.243)	546242	046243	044128	Large	1	3	3
6MM PPC (.243)	546254	046255	044103	Small	6	3	3
25 WIN SS MAG (.257)	546263	046709	044712	Large	35	4	4
25/35 WIN (.257)	546266	046267	044104	Large	2	4	4
260 REM (.264)	546269	046441	044106	Large	1	5	4
257 ROBERTS (.257)	546274	046275	044104	Large	1	4	4
257 WBY (.257)	546276	046277	044104	Large	5	4	4
264 WIN MAG (.264)	546278	046279	044123	Large	5	5	4

SERIES III RIFLE DIES (CONTINUED)

BOTTLENECK CARTRIDGE	Full-Length Die Set \$50.35	Full-Length Die \$39.28	Seating Die \$22.60	Primer Punch Size	Shell Holder \$8.17	Trimmer Pilot \$4.24	Bullet Puller Collet \$10.93
270 WBY (.277)	546298	046299	044107	Large	5	6	5
6.8MM REM SPC (.277)	546299	046711	044713	Large	12	6	5
6.5/284 (.284)	546301	046443	044106	Large	1	5	4
284 WIN (.284)	546302	046303	044108	Large	1	7	6
7MM REM ULTRA MAG (.284)	546307	046454	044133	Large	5	7	6
7MM REM SA ULTRA MAG (.284)	546309	046452	044108	Large	5	7	6
7MM WBY (.284)	546330	046331	044108	Large	5	7	6
300 SAV (.308)	546348	046349	044111	Large	1	9	7
7.5 SWISS (.308)	546360	046361	044111	Large	30	9	7
32/20 WIN (.308)	546364	046365	044113	Small	7	9	7
7.65 BELG (.312)	546368	046369	044114	Large	24	10	7
7.7 JAP (.312)	546370	046371	044114	Large	1	10	7
8MM REM MAG (.323)	546384	046385	044116	Large	5	11	8
338 ULTRA MAG (.338)	546389	046446	044138	Large	5	13	9
340 WBY (.338)	546392	046393	044117	Large	5	13	9
35 REM (.358)	546398	046399	044130	Large	26	15	9
35 WHELEN (.358)	546400	046401	044119	Large	1	15	9
375 REM ULTRA MAG (.375)	546450	046458	044121	Large	5	16	10

*Comes with a dura-chrome expander (nonelliptical expander).

Series IV Specialty Rifle Die Sets

Our specialty die shop creates New Dimension™ dies for loading discontinued cartridges, wildcat cartridges or any obscure cartridges. For fast service, we have many calibers of dies in stock; and our die shop can make dies for any cartridge, to any specifications you don't see listed. **\$83.32 each**

SERIES IV SPECIALTY RIFLE DIE SETS	
Cartridge	Item No.
17/222 (.172)	546202
17/223 (.172)	546204
20 TACTICAL (.204)	546209
20 VT (.204)	546205
5.7X28 FN (.224)	546203
218 BEE (.224)	546206
219 ZIPPER (.224)	546208
22 K-HORNET (.224)	546214
22 PPC (.224)	546216
22 RCFM-JET (.222)	546218
224 WBY (.224)	546230
5.6X50 MAG (.224)	546234
22/250 ACKLEY IMP (.224)	546219
5.6X57 (.224)	546236
.22-6MM (.224)	546249
5.6X52R (.227)	546238
22 SAV HP (.227)	546240
6MM REM BR (.243)	546432
6MM/223 (.243)	546248
6MM/284 (.243)	546250
6MM INT (.243)	546252
6MM TCU (.243)	546256
6X47 REM (.243)	546258
250 SAV (.257)	546270
25 REM (.257)	546260
25/20 WIN (.257)	546264
25/284 (.257)	546268
256 WIN (.257)	546272
6.5MM TCU (.264)	546296
6.5/06 (.264)	546280
6.5X57 (.264)	546284
6.5X68 (.264)	546286
6.5 CARC (.268)	546288
6.5 JAP (.264)	546290
6.5 MANN (.264)	546292
6.5 REM MAG (.264)	546294
280 ACKLEY IMP (.284)	546321
7.5 SWISS "K31" (.308)	546361

SERIES IV SPECIALTY RIFLE DIE SETS	
Cartridge	Item No.
7.5 SWISS (.308)	546504
7X47 HELM (.284)	546306
7x30 WATERS (.284)	546304
7X61 S&H (.284)	546310
7X64 (.284)	546312
7X65R (.284)	546314
7MM REM BR (.284)	546324
7MM TCU (.284)	546328
7MM/223 INGRAM (.284)	546318
7MM MERRILL (.284)	546322
7MM STW (.284)	546440
7.35 CARC (.300)	546332
30 MERRILL (.308)	546338
30 HERRETT (.308)	546334
30-30 ACKLEY IMP (.308)	546345
30-40 Krag (.308)	546344
30/06 ACKLEY IMP (.308)	546341
303 SAV (.308)	546354
308 NORMA MAG (.308)	546356
300 H&H (.308)	546346
7.62 RUSS (.308)	546362
32 WIN SPL (.321)	546372
32/40 WIN (.321)	546374
30/378 WBY (.308)	546419
325 WSM (.323)	546387
7.92X33 KURZ (.323)	546375
8X50R (.323)	546383
8x60S (.323)	546376
8x68S (.323)	546378
8MM/06 (.323)	546380
8x56 HUNGARIAN-MANN (.329)	546385
8.15X46R (.324)	546386
33 WIN (.338)	546388
338/06 (.338)	546395
338/378 WBY (.338)	546391
338 LAPUA RIFLE (.338)	546393
338 FEDERAL (.338)	546397
348 WIN (.348)	546394
357 HERRETT (.358)	546396
350 REM MAG (.358)	546402
358 N MAG (.358)	546406
358 WIN (.358)	546408
9.3x57 (.366)	546410
9.3x62 (.366)	546412

SERIES IV SPECIALTY RIFLE DIE SETS	
Cartridge	Item No.
9.3x74R (.366)	546414
38/55 WCF (.375)	546537
375 WIN (.375)	546530
376 STEYR (.375)	546417
378 WBY (.375)	546418
10.3X60 (.415)	546420
416 REM MAG (.416)	546426
416 TAYLOR (.416)	546427
416 RIGBY (.416)	546428
416 WBY (.416)	546430
458 SOCOM (.458)	546464
460 WBY (.458)	546422
50/70 GOVT (.510)	546462
50 ALASKAN (.510)	546586
BLANK CART 22-45 CAL	544591

*Blank Cart # 544591 \$116.33

Series IV Specialty Handgun Dies

Our specialty die shop creates New Dimension™ dies for loading discontinued cartridges, wildcat cartridges or any other hard-to-find ammunition. For fast service, we have many calibers of dies in stock, and our die shop can make dies for any cartridge, size or specifications you don't see listed. Our new manufacturing process has greatly reduced turn-around time on orders. Please call Hornady Customer Service for more information on availability and prices.

\$83.32 each

Cartridge	Item No.	Cartridge	Item No.
30 LUGER	546336	44/40 WIN	546545
38 S&W	546521	44 AUTO MAG	546545
357 SIG	546575	45 SCHOFIELD	546546
357 B&D/44	546404	400 COR BON	546538
38/40 WIN	546536	50 AE	546580
8MM LEBEL R	546510	500 LINEBAUGH	546587
9 x 23	546532	BLANK CART COWBOY ACT	544590

Series II Handgun Dies

STRAIGHT-WALLED CARTRIDGE	3-Die Set \$55.35	Full-Length Die-\$36.51	Seating Die \$26.21	Expander Die \$22.52	Primer Punch	Shell Holder \$8.17	Trimmer Pilot \$4.24	Bullet Puller Collet-\$10.93	Taper Crimp Die
25 ACP	546500	046501	044140	044502	Small	37	4	4	—
32 ACP (.311)	546506	046507	044113	044508	Small	22	10	7	—
32 S&W L/S/H&R Mag.	546509	046510	044143	044511	Small	36	10	7	—
9MM Luger/ 9x21	546515	046516	044144	044517	Small	8	15	9	044170
9 x 18 Makarov	546512	046513	044154	044514	Small	8	15	9	—
380 Auto	546518	046519	044144	044517	Small	16	15	9	—
38 Super Auto	546524	046525	044144	044526	Small	8	15	9	044170
38—357—357 Mag.	546527	046528	044145	044523	Small	6	15	9	—
10MM Auto—40 S&W	546533	046534	044146	044535	Large	10	21	11	044171
41 Mag./41 AE RN/SWC	546539	046540	044147	044541	Small	29	17	11	—
44 Spl./44 Mag.	546548	046549	044148	044544	Large	30	18	12	—
45 ACP/WM AR	546554	046555	044151	044556	Large	1	19	13	044172
45 Colt RN/SWC	546582	046583	044151	044556	Large	32	19	13	—
*454 Casull	546584	046584	044151	044556	Large	32	19	13	044588
*460 S&W	546583	046720	044721	044719	Large	46	19	13	044722
*480 Ruger/475 Linebaugh	546547	046585	044158	044586	Large	14	23	—	044174
*500 S&W	546585	046699	044700	044701	Large	44	50	—	044702

*Denotes 4 Die Set. \$81.67

Get match-winning performance from your press with Hornady's Match-Grade™ New Dimension™ dies.

To get ultra-precise alignment and match-winning performance from your press, you'll want Hornady's Match Grade™ New Dimension™ Dies. The neck size die features interchangeable, self-centering neck size bushings (available in .002" increments) that eliminate the chance of over sizing your case necks and overworking the brass. Tight tolerances at the press translate into tighter groups at the range! See below for a listing of available dies and bushings.



Available in two styles; full-length sizing and shoulder bump neck size. Both styles feature interchangeable neck sizing bushings. Select the bushing your cartridge requires to complete your Match Grade™ Die.

MATCH GRADE DIES	CARTRIDGE	Full-Length Die \$50.51	Neck-Size Die \$50.51	Primer Punch Size	Shell Holder \$8.17	Trimmer Pilot \$4.24	Bullet Puller Collet - \$10.93
	223 Rem.	544229	544227	Small	#16	#1	#2
22-250 Rem.	544221	544231	Large	#1	#1	#2	
6MM PPC	544255	544253	Small	#6	#3	#3	
6MM BR	544251	544259	Small	#1	#3	#3	
243 Win.	544245	544243	Large	#1	#3	#3	
308 Win.	544359	544357	Large	#1	#9	#7	

Select the Bushing Your Cartridge Requires \$21.71 each

.22 Cal. Bushings		6MM Bushings		.30 Cal. Bushings	
.242 Bushing	No. 594242	.260 Bushing	No. 594260	.332 Bushing	No. 594332
.244 Bushing	No. 594244	.262 Bushing	No. 594262	.334 Bushing	No. 594334
.246 Bushing	No. 594246	.264 Bushing	No. 594264	.336 Bushing	No. 594336
.248 Bushing	No. 594248	.266 Bushing	No. 594266	.338 Bushing	No. 594338

Match Grade™ and New Dimension™ are trademarks of Hornady Manufacturing Co.

MATCH GRADE

FEATURES

1) SELF-CENTERING SPINDLE

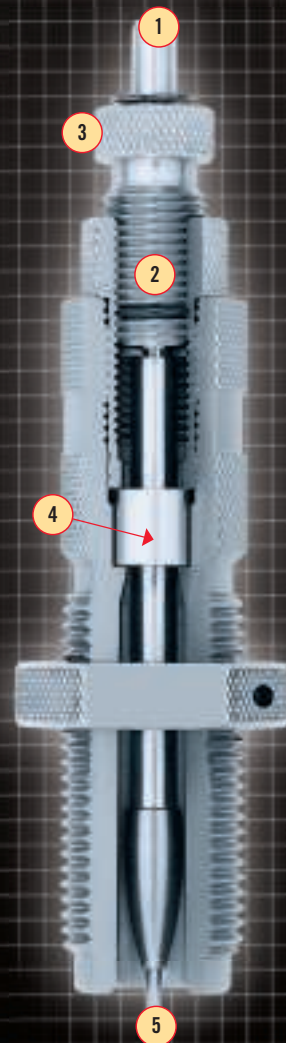
Free-floating spindle design ensures precise, concentric neck expansion.

2) KNURLED SPINDLE HOLDER

Makes changing neck sizing bushings fast and easy.

3) SPINDLE ADJUST WITH O-RING

Provides slight tension for fine adjustments, and holds setting once in place.



4) BUSHING DIES

Available in .002" increments, these bushings fully eliminate neck resizing problems. Tight tolerances here translate into tighter groups.

5) REPLACEABLE HEADED DECAP PIN

The replaceable decap pin is unique to the Match-Grade™ New Dimension™ Dies.

RELOADING

CUSTOM-MADE DIES

We will build any die for any cartridge – any time!

What you'll need to order a custom-made die:

- ✓ Cartridge Name
- ✓ Bullet Diameter
- ✓ Parent Case
- ✓ Three (3) Fired Cases
- ✓ Chamber Reamer Drawings
- ✓ Die Marking
(Up to 12 characters including spaces)

Please call for further information or to place an order.

800-338-3220

Need a die that we don't offer in our product line? Whether your firearm is an old English double or a new top-of-the-line match rifle, you can now have a perfect, precision die, custom-crafted to suit your needs!

Hornady Manufacturing now offers the advantage of making custom dies to your specifications. These custom-manufactured dies are available in either our Custom-Grade™ New Dimension™ (standard) or Match-Grade™ New Dimension™ die configuration, and can be made to load any cartridge.

Our custom-manufactured dies are made on precision CNC machines, that produce an exacting die to extremely tight tolerances. All we need is a chamber cast, three fired cases or a chamber reamer drawing.

Each custom-manufactured die is hand crafted for a perfect fit. Expander balls, shell holders, shell plates, trimmer pilots, bullet seating stems and alignment sleeves can be made to fit any bullet of any profile, lead or jacketed. These precision dies give the handloader total control over the loading process!



Hydraulic Form Die

2-DIE SET		
CASE LENGTH	DESCRIPTION	PRICE
2.5" OR LESS	Full-Length Die Set	\$120.00
	Neck Size Die Set	\$120.00
2.6" OR MORE	Full-Length Die Set	\$145.00
	Neck Size Die Set	\$145.00
3.6" OR MORE	Full-Length Die Set	\$320.00
	Neck Size Die Set	\$320.00
2-DIE SET MATCH GRADE		
CASE LENGTH	DESCRIPTION	PRICE
2.5" OR LESS	Full-Length Die Set	\$161.00
	Neck Size Die Set	\$161.00
2.6" OR MORE	Full-Length Die Set	\$176.00
	Neck Size Die Set	\$176.00
3-DIE SET		
CASE LENGTH	PRICE	
2.5" OR LESS	\$145.00	
2.6" OR MORE	\$166.00	
4-DIE SET		
DESCRIPTION	PRICE	
Handgun	\$200.00	
RADIUS SHOULDER DIES		
DESCRIPTION	PRICE	
2.5" OR LESS	\$161.00	
2.6" OR MORE	\$174.00	

SINGLE CUSTOM DIE		
CASE LENGTH	DESCRIPTION	PRICE
2.5" OR LESS	Neck Size Die	\$101.00
	Full Length Size Die	\$101.00
	Expander Die	\$63.00
	Bullet Seating Die	\$55.00
	Taper Crimp Die	\$63.00
	Body/Shoulder Bump Die	\$112.00
	Neck/Shoulder Bump Die	\$112.00
	Mag Full Length Size Die	\$132.00
	Mag Neck Size Die	\$132.00
	2.6" OR MORE	Neck Size Die
Full Length Size Die		\$120.00
Expander Die		\$76.00
Bullet Seating Die		\$58.00
Taper Crimp Die		\$76.00
Body/Shoulder Bump Die		\$132.00
Neck/Shoulder Bump Die		\$132.00
Mag Full Length Size Die		\$146.00
Mag Neck Size Die		\$146.00
3.6" OR MORE		Neck Size Die
	Full Length Size Die	Call
	Expander Die	Call
	Bullet Seating Die	Call
	Taper Crimp Die	Call
HYDRULIC FORM DIE KIT		
DESCRIPTION	PRICE	
2.5" OR LESS	\$145.00	
2.6" OR MORE	\$166.00	

SINGLE FORM DIE		
CASE LENGTH	DESCRIPTION	PRICE
2.5" OR LESS	Form Die	\$63.00
	Form Die with Reamer	\$117.00
	File Type Trim Die	\$76.00
2.6" OR MORE	Form Die	\$76.00
	Form Die with Reamer	\$129.00
3.6" OR MORE	File Type Trim Die	\$88.00
	Form Die	Call
	Form Die with Reamer	Call
	File Type Trim Die	Call
CUSTOM ACCESSORIES		
	AP Shell Plate	\$96.00
	Universal Shell Holder	\$33.00
	Case Trimmer Pilot	\$50.00
	Elliptical Expander	\$50.00
	Custom Mandrel under .375"	\$50.00
	Neck-Turning Mandrel over .375"	\$50.00
	Bullet Seating Stem	\$40.00
	Bullet Alignment Sleeve	\$50.00

Prices based on 7/8" x 14 die stock.

Note: For case diameters over .585" call for price. Non-standard bullet diameters must add \$50.00 to each die. Delivery on custom-manufactured dies is approximately 6 to 8 weeks, and payment is due at the time of ordering.

RCBS Style Expander Spindle Assemblies

Make your RCBS size die easier and more convenient to use with this Carbide Expander Spindle Assembly designed to fit RCBS Dies. The carbide expander ball provides chatter-free neck expansion, while reducing stretching and leaves inside of neck extra smooth. Choose item number from the chart at right. **\$36.52 each**

New Dimension™ File-Type Trim Die

If you're only trimming one caliber of cases, this is the most economical way to do it. Screw the die into your press, tighten the Sure-Loc® ring, raise a case into the die and use a file to trim away the protruding portion. **\$34.32 each**

FILE TYPE TRIM DIES	
Cartridge	Order #
223 Rem.	040586
22/250	040589
243 Win.	040591
7MM Rem. Mag.	040612
308 Win.	040620
30/06	040623
30 Herrett	041631
357 Herrett	041025

HARDENED STEEL CONSTRUCTION:

Die cannot be damaged by filing cases to length.

STANDARD THREADS:

Fits most presses, and also works with Hornady's Lock-N-Load™ Quick Change Die system.



RCBS STYLE EXPANDER ASSEMBLIES

Cartridge	Cartridge
Item No. 044690 221 Rem. 224 Wby.	Item No. 044694 6.5MM TCU 6.5 Jap. 6.5 x 55 6.5/06 6.5 Rem. Mag.
Item No. 044691 219 Zipper 222 Rem. 222 Rem. Mag. 223 Rem. 225 Win. 22/250 220 Swift	Item No. 044695 6.5 Mann. 6.5 Carc. 264 Win. Mag. 270 Win. 270 Wby. 7 x 57 (7MM Mau.) 7 x 61 S&H
Item No. 044692 243 Win. 6MM Int. 6 x 47 Rem. 244/6MM Rem. 6MM/284	Item No. 044696 7MM Rem. Mag. 7MM Wby. 7MM Exp./280 284 Win. 7MM TCU
Item No. 044693 250 Sav. 25 Rem. 25/35 Win. 25/06 257 Rbts. 257 Wby. 25/284	Item No. 044697 30/30 Win. 300 Sav. 303 Sav. 308 Win. 30/40 Krag. 7.5 Swiss 7.62 Russian 30/06 308 N. Mag. 300 H&H Mag. 300 Wby. 300 Win. Mag.
Item No. 044698 25/20 Win. 256 Win.	



HARDENED STEEL ELLIPTICAL EXPANDER:
Uniform expansion and smooth release from case neck.

New Dimension™ Neck Size Die

Neck sizing with these dies can eliminate problems of excessive head space, and align the bullet perfectly with the bore, resulting in better accuracy and longer case life. Should only be used for bolt-action rifle cases.

Auto-loading, lever and pump action rifles usually require full-length resizing. Accepts all Mag and Short Mag Calibers. **\$29.21 each**

NECK SIZE DIES						
20 CAL. Item No. 046038 204 Ruger	224 Wby. Mag. 225 Win. 22-250 Rem.	6mm Rem. 6mm - 284 240 Wby. Mag.	6.5 x 57 Mauser 6.5 - 06 6.5 Rem. Mag. 264 Rem. Mag. 6.5 x 68 mm	7 MM Cal. Item No. 046044 7mm Merrill 7mm-08 Rem. 7 x 57mm Mauser 284 Win. 7 x 65 R 7 x 64 Brenneke 280/7mm Rem. Exp. 7 x 61 S&H 7mm Rem. Mag. 7mm Wby. Mag. 7mm STW	30 Cal. Short Item No. 046050 7.62 x 39 Rus. (.308) 30-30 Win. 303 Sav. 30 Herrett 30 Merrill 300 Sav. 30 Cal. Item No. 046045 7.5 x 55 Swiss 308 Win. 7.62 x 54R 30-40 Krag 30-06 Spgfd. 300 H&H Mag. 308 Norma Mag. 300 Win. Mag. 300 Wby. Mag.	30 Cal. Mag. Item No. 046057 300 Rem. SAUM 300 WSM 300 Rem. U.M. 30-378 Wby. Mag. 338 Cal. Mag. Item No. 046058 33 Win. 338 Win. Mag. 338 Rem. U.M. 338 Lapua Mag. 338-378 Wby. Mag.
22 Cal. PPC Item No. 046053 22 PPC	220 Swift Item No. 046054 220 Swift	257 Cal. Item No. 046042 250 Sav. 257 Roberts 25-284 25-06 Rem. 257 Wby. Mag.	270 Cal. Item No. 046051 270 Win. 270 Wby. Mag.	270 Cal. Mag. Item No. 046055 270 WSM	30 Cal. Item No. 046045 7.5 x 55 Swiss 308 Win. 7.62 x 54R 30-40 Krag 30-06 Spgfd. 300 H&H Mag. 308 Norma Mag. 300 Win. Mag. 300 Wby. Mag.	338 Cal. Mag. Item No. 046058 33 Win. 338 Win. Mag. 338 Rem. U.M. 338 Lapua Mag. 338-378 Wby. Mag.
22 Cal. Short Item No. 046066 218 Bee 22 RCFM-Jet 22 Hornet 22 K-Hornet	6MM Cal. PPC Item No. 046052 6MM PPC	257 Roberts 25-284 25-06 Rem. 257 Wby. Mag.	270 Cal. Mag. Item No. 046055 270 WSM	7MM Cal. Short Item No. 046049 7mm-223 Ingram 7mm TC/U 7 x 47 Helm 7 x 30 Waters 7mm Rem. BR	30 Cal. Item No. 046045 7.5 x 55 Swiss 308 Win. 7.62 x 54R 30-40 Krag 30-06 Spgfd. 300 H&H Mag. 308 Norma Mag. 300 Win. Mag. 300 Wby. Mag.	35 Cal. Item No. 046046 358 Win. 35 Whelen 358 Norma Mag.
22 Cal. Item No. 046040 221 Rem. "Fireball" 222 Rem. 223 Rem. 222 Rem. Mag. 5.6 x 50 Mag. 219 Zipper	6MM Cal. Short Item No. 046047 6mm-223 6mm TC/U 6 x 47mm 6mm Rem. BR 6MM Cal. Item No. 046041 6mm Rem. Inter. 243 Win.	6.5 Cal. Item No. 046043 6.5 Carcano 6.5 Jap 6.5 Mann./Schoe. 6.5 x 55 Swede 260 Rem.				

Custom-Grade™ and New Dimension™ are trademarks of Hornady Manufacturing Co. Sure-Loc® is a registered trademark of Hornady Manufacturing Co.

DIES & ACCESSORIES

RELOADING



Seating Dies

New Dimension™ Seating Dies

Our seating system holds the bullet, the case neck and the seating stem in perfect alignment in the sleeve BEFORE the bullet enters the neck of the case. Ensures the straightest bullet seating over fixed or solid die seaters.

In-Line Bullet Seating System

Includes a floating bullet alignment sleeve, a floating steel seating stem and a built-in crimper for benchrest precision when seating bullets. Bullets are aligned in the sleeve as they enter the die for optimum seating and enhanced accuracy. Finger adjust and lock!

Taper Crimp Die

New Dimension™ Taper Crimp

This die removes the flare from the case mouth and crimps case mouth around the bullet while maintaining a sharp edge for proper head-space. Improves feeding of reloaded cases in semi-automatic handguns.

Cartridge	Item No.	Cost
9mm Luger/9x21 RN/HP 38 Super Auto	044170	\$22.75
10mm Auto - 40 S&W	044171	\$22.75
400 Corbon	044173	\$24.51
45 ACP/WM 45 AR	044172	\$22.75
454 Casull/45LC	044588	\$24.51
460 S&W	044722	\$27.60
475 Linebaugh	044174	\$24.51
500 S&W	044702	\$24.51



Expander Dies

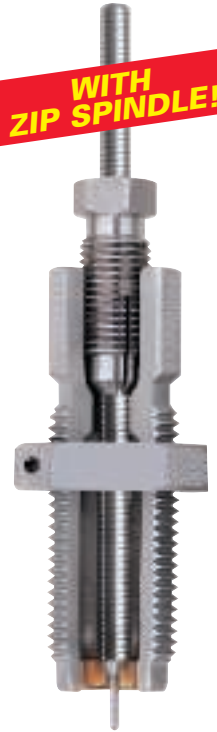
New Dimension™ Expander Dies

These dies put a consistent slight "bell" or flare on straight-walled rifle or pistol case mouths. Prepares the case so powder and bullet insertion is smoother.



All Hornady dies are warranted against defects in material and workmanship for the life of the product.

WITH ZIP SPINDLE!



Straight Wall Sizer

Titanium Nitride Sizing Die

Features Titanium Coated Sizing Ring. Eliminates case sticking, with no lube necessary. The super-hard, smooth coating is used in high-pressure, high-wear tools to reduce abrasion, so it's perfect for resizing relatively soft pistol brass, and won't scratch your cases. Less friction also means less wear on cases, for longer case life. Spindle locks in place with collet lock for precision decap and easy adjustment.

Accessories

Sure-Loc® Lock Rings

Lets you make precise adjustments of all standard 7/8"-14 dies and accessories.

Lock Ring: Clamps around the whole die. Can't damage the threads. Applies constant pressure across the threads to hold the ring in place. Most other die rings lock by jamming a set screw directly into the threads.

Wrench Flats: Remove and replace dies without pliers ruining the lock ring.

No. 044000 \$3.92



Stuck Case Remover

Consists of #7 drill and 1/4"-20 tap. Remover body fits universal shell holder ram or any standard reloading press. No wrenches required. No chance of damaging size die. Fits most presses with universal shell holder ram and all calibers.

No. 050033 \$16.84



Hornady Die Wrench

Fits the flats of the New Dimension™ dies spindle assembly, lock rings and die body.

No. 396490 \$8.21



Blank Dies

Cowboy Action shooters have a need for dies to load blanks and Hornady's engineers have delivered. They devised a set of dies that allow the loading of blanks for all popular Cowboy Action cartridges, from the 32-20 through the 45-70. These dies are compatible with all 7/8" x 14 TPI presses. No. 544591 \$83.32



MicroJust™ Seating Stem

Add the MicroJust™ to any New Dimension™ seating die, and you can precisely set bullet seating depth in .001" increments. It's an economical way to achieve accurate bullet seating depth for benchrest accuracy and consistency without the extra cost of another die. Hornady Die Sets already include inline seater. Simply replace the standard seating adjustment stem with the MicroJust™ seating stem.

No. 044090 \$26.95



New Dimension™ and MicroJust™ are trademarks of Hornady Manufacturing Co. Sure-Loc® is a registered trademark of Hornady Manufacturing Co.