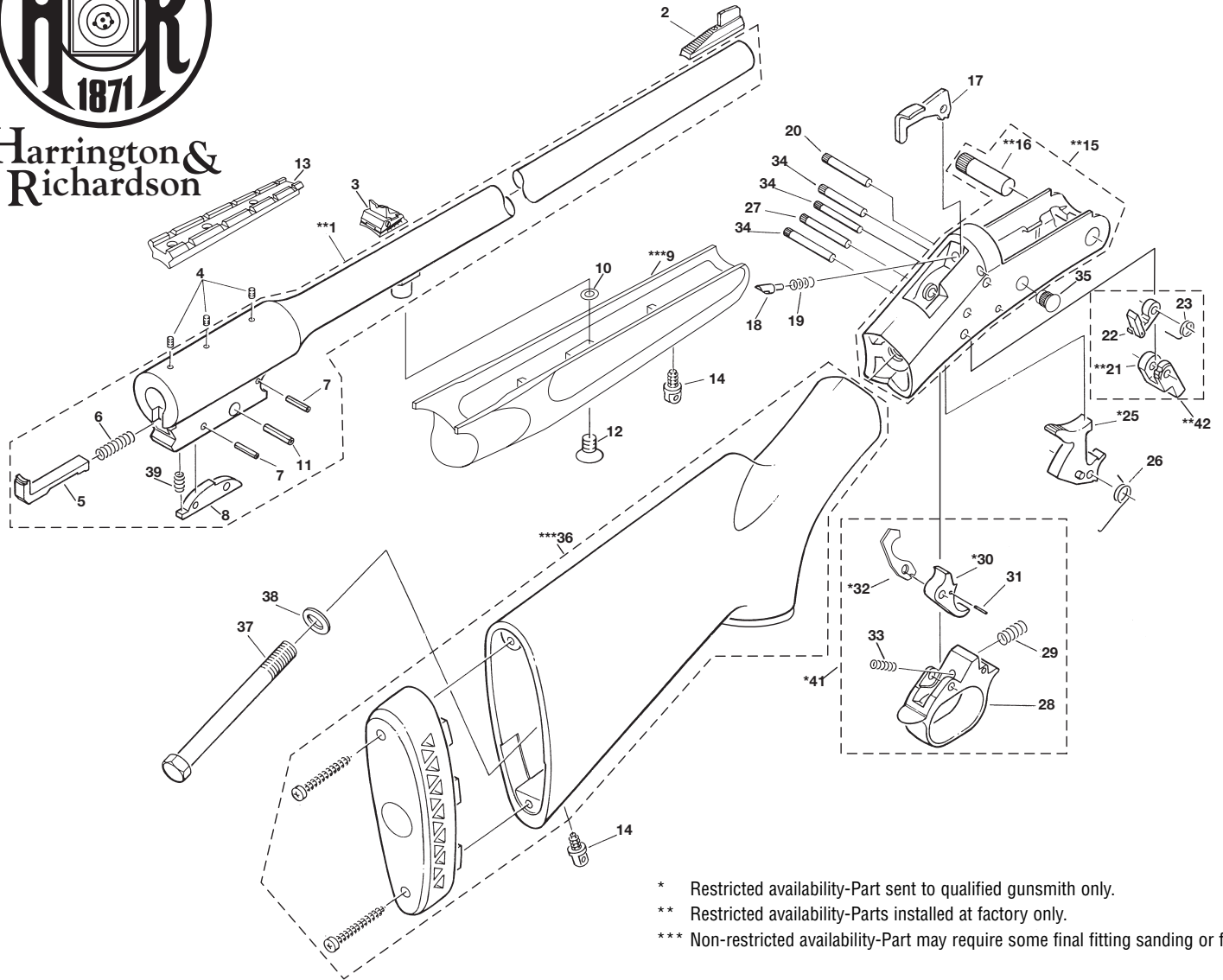




Harrington &
Richardson

Sportster™/Versa Pack™



* Restricted availability-Part sent to qualified gunsmith only.
 ** Restricted availability-Parts installed at factory only.
 *** Non-restricted availability-Part may require some final fitting sanding or filing.

ILL. NO.	PART NAME
**1	BARREL
2	SIGHT-FRONT
3	DOVETAIL-REAR SIGHT
3	ELEVATOR-REAR SIGHT
4	DELFIN FILLER SCREW
5	EJECTOR
6	EJECTOR SPRING
7	PIN EJECTOR LATCH
8	EJECTOR LATCH
**9	FOREND
10	SPACER RING-FOREND
11	EJECTOR STOP PIN
12	SCREW-FRD.
13	SCOPE BASE
14	SWIVEL STUD
**15	FRAME
**16	JOINT PIN
17	RELEASE LEVER
18	FIRING PIN
19	SPRING-FIRING PIN
20	RELEASE LEVER PIN
**21	BARREL CATCH
22	STRIKER

ILL. NO.	PART NAME
23	LIFTER SPRING
24	HAMMER EXTENSION (NOT SHOWN)
*25	HAMMER
26	HAMMER SPRING
27	TRIGGER GRD. PIN
28	TRIGGER GRD.
29	BARREL CATCH SPRING
*30	TRIGGER
31	TRIG. EXTEN PIN
*32	TRIG EXTENSION
33	SPRING TRIGGER
34	HMR, TRIG & CTCH PIN
35	VIEW HOLE PIN
***36	STOCK
37	SCREW TANG
38	WASHER TANG SCREW
39	SPRING EJECTOR LATCH
40	BARREL SHROUD (NOT SHOWN)
*41	TRIGGER GUARD ASSY.
**42	BRL. CATCH STRIKER ASS'Y.
43	SHROUD SCREW (NOT SHOWN)

ILL. NO.	PART NAME	SPORTSTER 17 M2 RIMFIRE SS1-217 17 MACH 2	SPORTSTER 17 HORNADY MAGNUM RIMFIRE SS1-017 17 HMR	SPORTSTER SS1-022 22S, L, R	SPORTSTER SS1-M22 22 WMR	SPORTSTER YOUTH SS1-Y22 22S, L, R	22/410 VERSA-PACK SCY-42S 22S, L, LR 410 BORE
**1	BARREL	R03264	R02954	R03811	R03810	R03811	R03232 S02779
2	SIGHT-FRONT	N/A	N/A	R03809	R03809	R03809	R03803 S03433
3	DOVETAIL-REAR SIGHT	N/A	N/A	R03651	R03651	R03651	R03651 N/A
3	ELEVATOR-REAR SIGHT	N/A	N/A	R03652	R03652	R03652	R03652 N/A
4	DELTRIN FILLER SCREW	N/A	N/A	R03102	R03102	R03102	R03102
5	EJECTOR	R02809	R02809	R02809	R02809	R02809	R02908 S02705
6	EJECTOR SPRING	S01695	S01695	S01695	S01695	S01695	S01695 S01695
7	PIN EJECTOR LATCH	S01676	S01676	S01676	S01676	S01676	S01676 S01676
8	EJECTOR LATCH	S01208	S01208	S01208	S01208	S01208	S01208 S01208
***9	FOREND	S02165	S02165	S02165	S02165	S02165	S02209
10	SPACER RING-FOREND	N/A	N/A	S02641	S02641	S02641	N/A
11	EJECTOR STOP PIN	S01677	S01677	S01677	S01677	S01677	S01677 S01677
12	SCREW FRD.	S01279	S01279	S03152	S03152	S03152	S03152
13	SCOPE BASE	R01331	R01331	N/A	N/A	N/A	N/A
14	SWIVEL STUD	S01851	S01851	S01851	S01851	S01851	N/A
**15	FRAME	R02728	R02728	R02728	R02728	R02728	S03649
**16	JOINT PIN	S01207	S01207	S01207	S01207	S01207	S01207
17	RELEASE LEVER	S01203	S01203	S01203	S01203	S01203	S01203
18	FIRING PIN	R03341	R03341	R03341	R03341	R03341	R02845
19	SPRING-FIRING PIN	S01697	S01697	S01697	S01697	S01697	S01697
20	RELEASE LEVER PIN	S02161	S02161	S02161	S02161	S02161	S02161
*21	BARREL CATCH	S03643	S03643	S03643	S03643	S03643	S03643
22	STRIKER	S02043	S02043	S02043	S02043	S02043	S02043
23	LIFTER SPRING	S01693	S01693	S01693	S01693	S01693	S01693
24	HAMMER EXTENSION	S01461	S01461	N/A	N/A	N/A	N/A
*25	HAMMER	S01202	S01202	S01202	S01202	S01202	S01202
26	HAMMER SPRING	S01691	S01691	S01691	S01691	S01691	S01691
27	TRIGGER GRD. PIN	S01670	S01670	S01670	S01670	S01670	S01670
28	TRIGGER GRD.	S01204	S01204	S01204	S01204	S01204	S01204
29	BARREL CATCH SPRING	S04006	S04006	S04006	S04006	S04006	S04006
*30	TRIGGER	S01205	S01205	S01205	S01205	S01205	S01205
31	TRIG EXTEN PIN	S01191	S01191	S01191	S01191	S01191	S01191
*32	TRIG EXTENSION	S01221	S01221	S01221	S01221	S01221	S01221
33	SPRING TRIGGER	S04005	S04005	S04005	S04005	S04005	S04005
34	HMR, TRIG & CTCH PIN	S02160	S02160	S02160	S02160	S02160	S02160
35	VIEW HOLE PIN	S03636	S03636	S03636	S03636	S03636	S03636
***36	STOCK	R02700	R02700	S02164	S02164	R02635	R02634
37	SCREW TANG	S01723	S01723	S01723	S01723	S01723	S01723
38	WASHER TANG SCREW	S01755	S01755	S01755	S01755	S01755	S01755
39	SPRING EJECTOR LATCH	S01696	S01696	S01696	S01696	S01696	S01696 S01696
40	BARREL SHROUD	N/A	N/A	N/A	N/A	N/A	R03585
*41	TRIGGER GUARD ASS'Y.	S02197	S02197	S02197	S02197	S02197	S02197
*42	BRL. CATCH STRIKER ASS'Y.	S02042	S02042	S02042	S02042	S02042	S02042
43	SHROUD SCREW	N/A	N/A	N/A	N/A	N/A	R02971



Harrington &
Richardson

Manufactured by: H&R 1871, LLC • 60 Industrial Rowe, Gardner, MA 01440 U.S.A. • www.hr1871.com